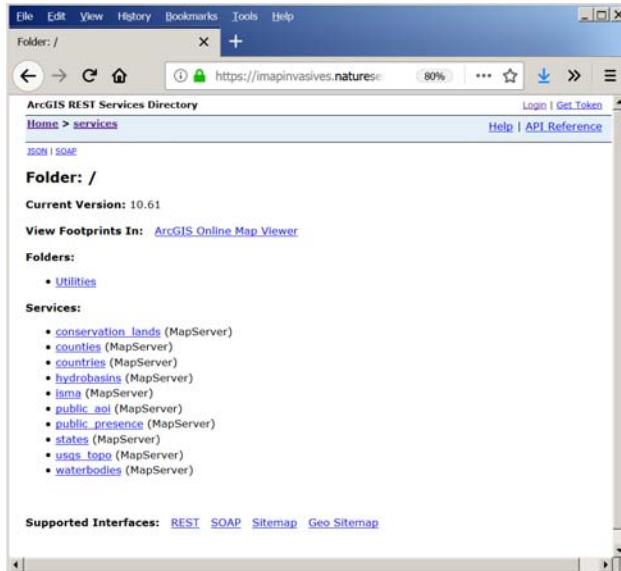


iMap 3 Web Map Services

To view the iMap 3 Web Map services, go to this link:

<https://imapinvasives.natureserve.org/arcgis/rest/services>

Once at this page, if you are not signed-in to iMap 3, you will see the services that are available to the public without authentication.

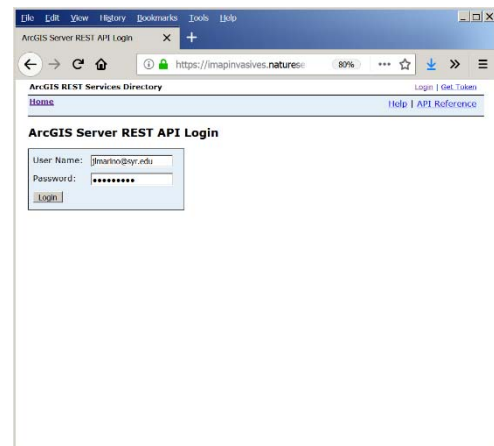


For many of the iMap 3 data services, notice that each service is comprised of several layers, so be sure to get the top-level service (e.g. for presence records, use this URL when connecting in AGOL/ArcMap/ArcGIS Pro/etc.:

https://imapinvasives.natureserve.org/arcgis/rest/services/public_presence/MapServer).

To see all services to which you have access, simply select the **Login** button at the top right of the screen. Enter your iMap 3 email address as the username and your iMap 3 password.

After signing-in, you should see all layers which you have access to view.



Connecting to iMap 3 data in ArcMap

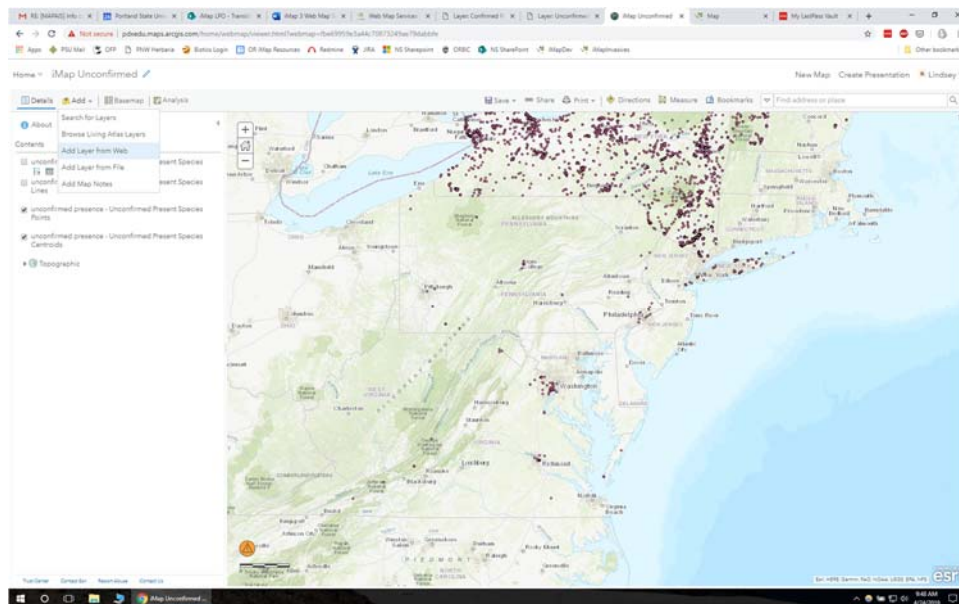
Click on the name of the layer you want to view in ArcMap. At the top of the page there will be links for viewing the layer in a variety of platforms. Click the link for ArcMap. This will download a .lyr file to your computer.

Open an ArcMap project and click the Add Data button. Navigate to the .lyr file and add it to your project. You can now view and ID all the features in that layer.

FYI: As of April 24, 2019 it seems best to click through to the individual layer and add those as you then gain access to the attribute table, e.g. rather than adding https://imapinvasives.natureserve.org/arcgis/rest/services/public_presence/MapServer, add the individual presence layers e.g. https://imapinvasives.natureserve.org/arcgis/rest/services/public_presence/MapServer/0

Connecting to iMap 3 data in ArcGIS Online

Navigate to the WMS URL of your layer of choice as above. Log in to ArcGIS Online and open a new map. Go to the Add + button and choose Add Layer from Web. Paste in the URL to the service you want to add. If it is a service only available to logged in users, you will be asked to enter your iMap username and password. Once that is correctly entered, the map service will load into your AGOL map.



To view the attribute table for the layer, be sure you have added the individual layer, e.g. https://imapinvasives.natureserve.org/arcgis/rest/services/unconfirmed_presence/MapServer/0 for unconfirmed presence points. In AGOL you access the attribute table of

layers by hovering over the layer and clicking the table icon that appears beneath the layer's name.

The screenshot shows the ArcGIS Online interface for a map titled 'iMap Unconfirmed'. The map displays a distribution of species points across Florida. A table is open at the bottom of the screen, showing the following data:

presence_id	observation_date	observer_name	scientific_name	state_common_name	jurisdiction	species_id	common_name	state_scientific_name	network_species_id
298,792	Nov 29, 2013	Michael Kerr - 584	Oenocaryum subense	Cuban burruah	394	Cuban burruah	Oenocaryum subense	1,731	
298,793	Jan 22, 2014	Jim Burdick - 480	Imperata cylindrica	Cogon Grass	382	Cogon Sabinal	Imperata cylindrica	1,086	
298,790	Jan 22, 2014	Jim Burdick - 480	Imperata cylindrica	Cogon Grass	382	Cogon Sabinal	Imperata cylindrica	1,086	
298,791	Jan 22, 2014	Jim Burdick - 480	Imperata cylindrica	Cogon Grass	382	Cogon Sabinal	Imperata cylindrica	1,086	
298,792	Jan 22, 2014	Jim Burdick - 480	Imperata cylindrica	Cogon Grass	382	Cogon Sabinal	Imperata cylindrica	1,086	