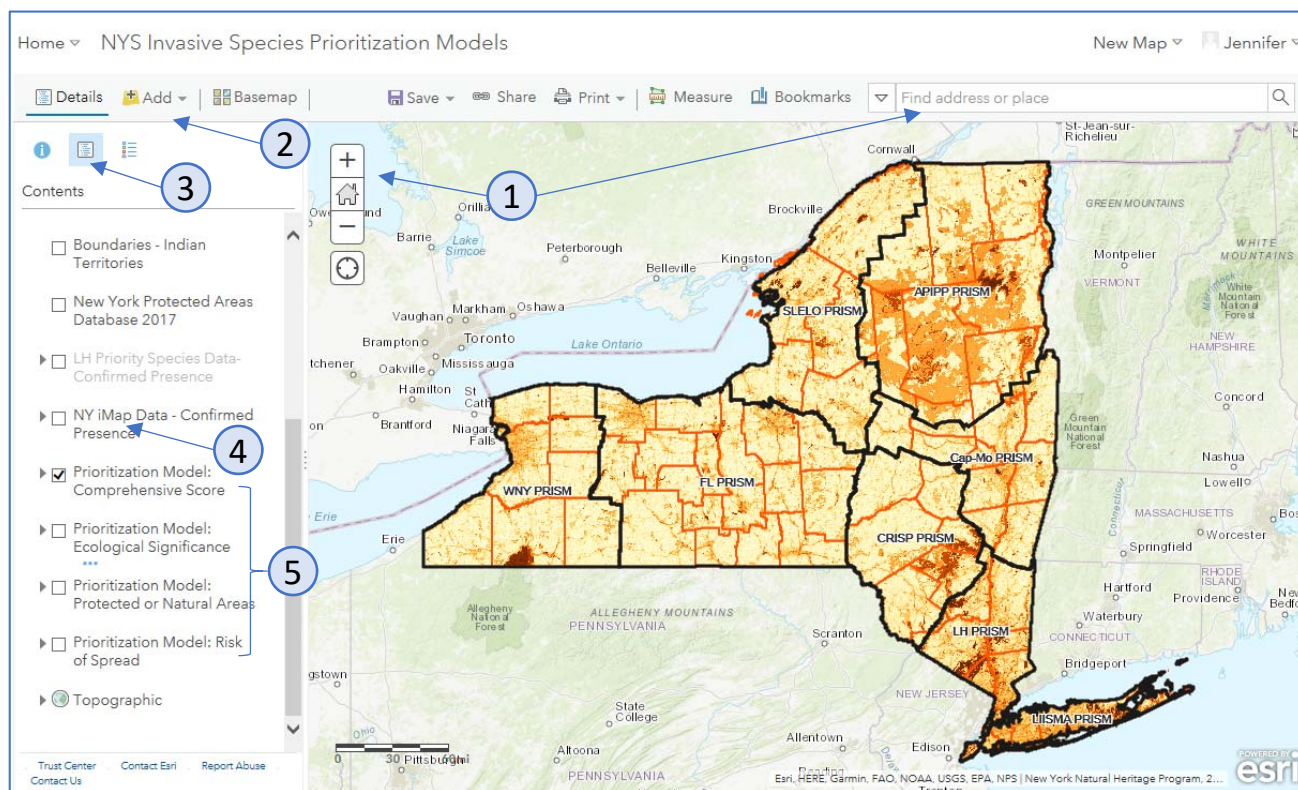


NY Invasive Species Prioritization Map Models

These models were created to highlight areas of the state that have high ecological significance, a high risk of spread of invasives into the area, and high value according to their protected status, using available spatial data sets that influence invasive species efforts. Please contact us at imapinvasives@dec.ny.gov if you have questions. The maps, combined with iMapInvasives data and other important spatial layers, can be accessed at:

<https://arcg.is/1DjqLn>



Using the spatial prioritization map models online

NOTE: Some browser configurations do not work well with ArcGIS Online. If you receive an error message, switch to a different browser (Explorer, Safari, Chrome, Firefox) or clear the browser's cache (Ctrl+Shift+Delete).

1. Navigate to or search for the location of interest on the map
2. If you have other data layers to add to this map, use the "Add" function (available only if signed in)
3. Click "Show Contents of Map" to see the map layers that can be turned on or off
4. Toggle this box on to see statewide iMap Presence data. Please be patient, it can take time to load (approx. 30 sec). Expand the arrow to see symbols.
5. The color ramp for each of the prioritization model layers indicate increasing importance as the color darkens. The comprehensive score is a combination of ecological significance, protected or natural area, and risk of spread.
 - Hover over any layer name and click the ●● to see more details and options



www.NYiMapInvasives.org
imapinvasives@dec.ny.gov

